

## 8 DAYS BHUTAN – LAND OF THE THUNDER DRAGON

Specially Prepared for SEA

Group Departure (**10-17 Nov, 2018**)



### Tour Price:

Twin Sharing From: **RMB 28,280/** person

Single Supplement: **RMB 4,680 /** person

### Travel Date:

**10-17 Nov, 2018**

**Registration Closing Date:** When tour is fully subscribed

### Deposit Amount:

**RMB 10,000/-** per person

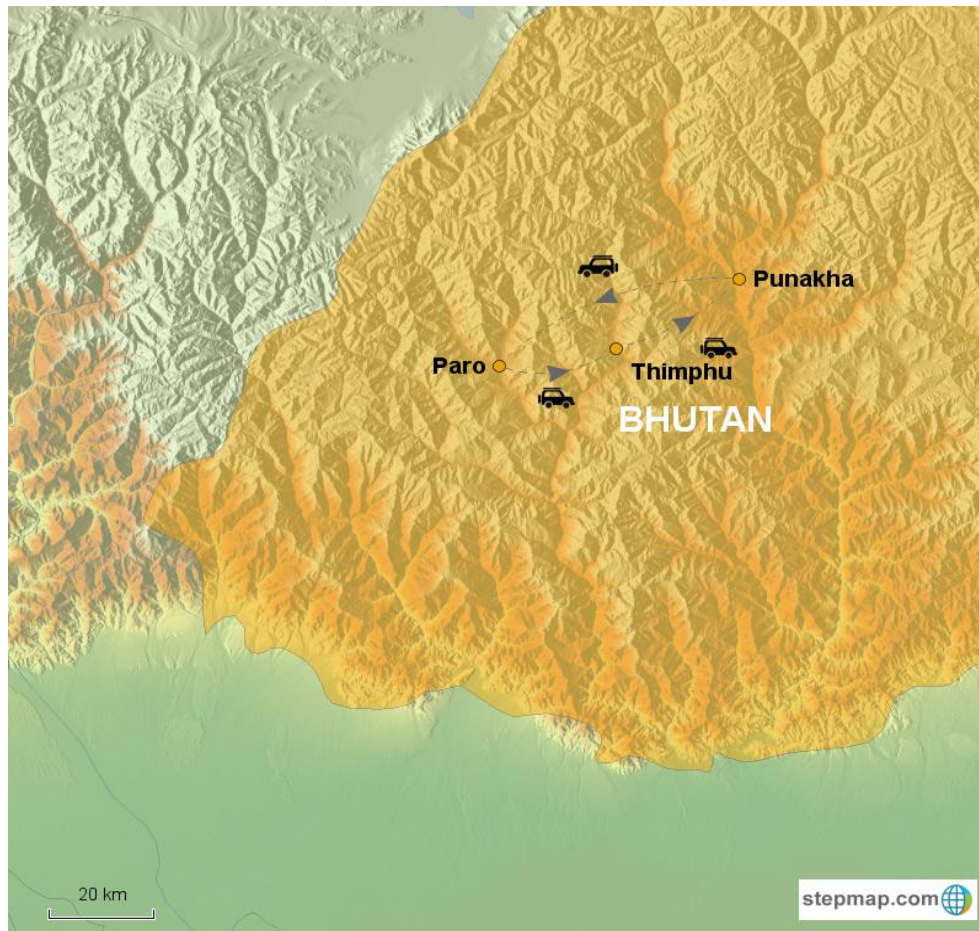
### Early Bird Promotion:

**RMB 300/** person discount if book with deposit by **12 Sep, 2018**

### Highlights:

- Happiness is a Place on the Earth
- Beautiful, religious and spiritual country with friendly people
- Home of the highest unclimbed mountains
- Bhutan has retained most of what other countries have lost already
- Small group size of maximum 16 persons

# ITINERARY SUMMARY



Land of the Thunder Dragon, one of the most mysterious and unknown of all Himalayan Kingdoms, hidden in isolation behind the high peaks of the Himalayas. Besides visiting dzongs and monasteries, this trip is specially designed for families to fully appreciate the unique culture and natural beauty of the Kingdom in a fun and engaging way.

We white-water raft along the Mo-chhu (river) in Punakha with the impressive Punakha Dzong as the backdrop, have a picnic lunch by the river and try archery, the national sport of Bhutan. Have the option to try fly-fishing and bike through easy farm roads in Paro and enjoy farm activities and interacting with the villagers. Finally, climb the dramatic Taktshang Monastery, built on a sheer cliff face at a height of 2950m.





# DETAILED ITINERARY

**DAY 01**  
**10NOV/SAT**

**SHANGHAI /BANGKOK**

Fly Shanghai /Bangkok FM839 0855 / 1220

Upon arrival, before we check into the Novotel Suvarnabhumi Airport Hotel, we will transfer you to Chatuchak Weekend Market for shopping which is the biggest wholesale market in SouthEast Asia, you may find variety souvenirs here.

Transfer back to airport hotel for the night.

**Overnight: Novotel Suvarnabhumi Airport Hotel**

**Meals: Nil**

**DAY 02**  
**11NOV/SUN**



BBS Tower View Point

**BANGKOK/PARO/THIMPHU**

Transfer to airport by hotel shuttle which is 24 hours available

Fly Bangkok/Paro KB151 0600 / 0800 (3 hours)

If we are lucky, we'll have glorious views of the snow-capped Himalayas on the way to Paro (Try and get the left hand seat for better view of the Himalayas).

Take a drive to Thimphu following Pa Chhu downstream. Drive on to the **BBS Tower Viewpoint** for a stunning view of the valley.

Brush shoulders with the everyday Bhutanese grocery shopping for local produce at the **Centenary Farmers Market**. Also see the new authentic **craft bazaar** of 80 stalls showcasing works by artisans from rural areas.

**Overnight: Thimphu**

**Meals: Breakfast, Lunch and Dinner**

**DAY 03**  
**12NOV/MON**



Dochu La Pass

**THIMPHU/PUNAKHA**

After breakfast, we will drive about 3 hours to Punakha. Climb up the mountain road to **Dochu La** at 3140m. On clear weather, the pass commands a wonderful panorama of the Eastern Himalayas.

From the pass, we begin descending through varied forest and finally emerging into the highly cultivated valley of Punakha. Take a **short hike through beautiful rice fields** to **Chimmi Lhakhang**, a temple dedicated to Drukpa Kuenley, who as a favorite saint of the Bhutanese people is known affectionately as "the Divine Madman".

Drive to visit a **stunning hill-top nunnery** - Sangchen Dorji Lhundrup Chholing. Have a chat with the nuns and enjoy the charm of the surrounds!

**Overnight: Punakha**

**Meals: Breakfast, Lunch and Dinner**

**DAY 04**  
**13NOV/TUE**



Punaka Dzong

**PUNAKHA**

After a fairly early breakfast, we head up to the Mo Chhu valley to begin our **white water rafting**. Pulsating grade 2 and 3 excitement (all year round) thrill as we raft along the Mo Chhu until our take-out point at the confluence of Pho and Mo chu below the Punakha Dzong. Have a **relaxing picnic** lunch by the river before trying a round or two in **archery**, the national sport of Bhutan.

In the afternoon, we visit **Punakha Dzong**. Located at the confluence of the Pho-chu (male-river) and Mo-chu (female-river), the Punakha Dzong is arguably the most impressive Dzong in the country.

**Overnight: Punakha**

**Meals: Breakfast, Lunch and Dinner**

**DAY 05**  
**14NOV/WED**

**PUNAKHA /PARO**

After breakfast, we drive back to Paro. En-route, we will stop over in Thimphu totake a fascinating tour of the working facility of **the National Institute of Traditional Medicine** that still dispenses traditional herbal medicines to the locals. Visit the **Folk Heritage Museum** – a 300 year old traditional house converted into a museum.

After lunch, we continue driving to Paro.

**Overnight: Paro**

**Meals: Breakfast, Lunch and Dinner**

**DAY 06**  
**15NOV/THU**



Kyichu Lhakang

**PARO**

This morning, we make an excursion to **Taktshang Monastery** – this has to be the monastery with the most outstanding setting in Bhutan. Set on a vertical cliff face at 2950m above sea level, it defies all engineering logic. Hike 2 hours up to get a more dramatic view of the monastery.

Just on the outskirts of Paro town, we visit **Kyichu Lhakang**, one of the oldest temples in Bhutan and have the opportunity to meet the local villages in a local **farm house**. Walk through cultivated farmlands and the village dotted along the way and end off to enjoy a **home-cooked dinner in a local farmhouse** for the authentic Bhutanese experience!

**Overnight: Paro**

**Meals: Breakfast, Lunch and Dinner**

**DAY 07**  
**16NOV/FRI**

**PARO**



Biking tour

We head out for a **short hike** off the tourist trail to 15<sup>th</sup> century **Zurig Lhakhang** above Paro Dzong overlooking the valley. It offers great views of Ta Dzong (watch Tower) and Paro Rinpung Dzong. Enroute, visit the iconic 17<sup>th</sup> century **Paro Rinpung Dzong** which means “the fortress of the heap of jewels.” A quick descent takes us to covered cantilever bridge marked with giant stupas. Upon descent, drive 30 minutes to see the exterior of the remote ruins of **Drukgyel Dzong** (*entry not allowed*) and on clear day.

This afternoon, do a biking tour: hop onto your **bicycle** and enjoy a 15 kilometers easy ride along farm road. Bike through cultivated farmlands and dotted villages and along the way, we make stop to enjoy farm activities! (Child bikes available)

**Overnight: Paro**

**Meals: Breakfast, Lunch and Dinner**

**PARO/BANGKOK/SHANGHAI**

**DAY 08**  
**17NOV/SAT**

After breakfast, transfer to the airport for your flight.

Fly Paro/Bangkok KB150 0920 / 1330 (3 hours)  
Fly Bangkok/Shanghai FM834 1650 / 2210 (4h20m)

**Meals: Breakfast**

## QUOTATION

**PRICES PER PERSON:**

- This trip requires minimum 6 passengers to run

Hotel Selected	Adult on twin sharing Per Person Price	Single Supplement Per Person Price
<b>For group of 6-9 people</b> <ul style="list-style-type: none"> <li><b>Bangkok:</b> Novotel Suvarnabhumi Airport Hotel (Superior Room)</li> <li><b>Thimphu:</b> Bhutan Suites (Suite)</li> <li><b>Punakha:</b> Drubchhu Resort (Superior Room)</li> <li><b>Paro:</b> Nak Sel Hotel ( Superior Room)</li> </ul>	RMB 29,490/-	RMB 4,680/-
<b>For group of 10-16 people</b> <ul style="list-style-type: none"> <li><b>Bangkok:</b> Novotel Suvarnabhumi Airport Hotel (Superior Room)</li> <li><b>Thimphu:</b> Bhutan Suites (Suite)</li> <li><b>Punakha:</b> Drubchhu Resort (Superior Room)</li> <li><b>Paro:</b> Nak Sel Hotel ( Superior Room)</li> </ul>	RMB 28,680/-	RMB 4,460/-
<b>Notes:</b> *Flight schedule is subject to change when making actual booking *Reservation closing date: when tour is fully subscribed *Early Bird discount of <b>RMB 300/- per adult</b> if book with deposit by <b>12 Sep, 2018</b> *Deposit: <b>RMB 10,000/-</b> per person *Pre-departure Meeting: 25 Oct, 2018		

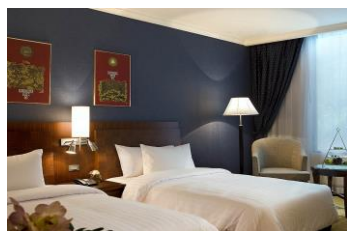
**COST INCLUDES:**

- Airfare: Shanghai / Bangkok/Paro/Bangkok/ Shanghai on economy class
- Airport taxes and fuel surcharges
- 7nights' accommodation as stated on twin or double sharing basis.
- Tours and transfers with a private English-speaking guide in private air-con vehicle
- All entrance fees as stated.
- Meals as stated
- Bhutan Visa

**COST EXCLUDES:**

- Thailand Visa (if required).
- Beverages in the restaurants where meals are included.
- Travel insurance
- Gratuities to guide and driver.
- Personal and other expenses such as bar bills and laundry not stated in the itinerary.

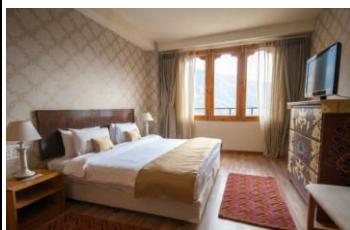
## HOTEL DESCRIPTIONS



### **Novotel Bangkok Suvarnabhumi Airport Hotel**

Touch down in 4-star comfort at Novotel Bangkok Suvarnabhumi Airport hotel, a 5-minute covered walk or free 24-hour shuttle ride from the terminals. No set check-in time, guests can arrive anytime and check-out 24 hours later.

<http://www.novotel.com/gb/hotel-6183-novotel-bangkok-suvarnabhumi-airport/index.shtml>



### **Bhutan Suites Thimphu**

This boutique hotel, located in Thimphu, Bhutan, is tucked away from noisy city traffic below 12th century Changangkha Lhakhang with wonderful, sweeping views of the Thimphu Valley.

<http://www.bhutansuites.com/>



### **Drubchhu Resort Punakha**

Drubchhu is a family owned and managed resort. Overlooking paddy fields and farm houses, Drubchhu is developed on the ruins of an old granary which was built by Zhabdung Jigme Choegyal more than a hundred years ago.

<http://drubchhu.com/>



### **Nak Sel Hotel Paro**

Naksel, a community-based project that is eco-friendly and Energy Saver efficient, blends the heritage of traditional Bhutanese architecture and the comfort of modern amenities. Main construction materials for Naksel are indigenous and locally purchased. Traditional windows, mud-bricks, framework and even furniture were locally crafted here in Ngoba Village.

<http://www.naksel.com/>





